

Dear Friend,

Hello & welcome back to **Firewire**, your friendly guide to the exciting world of web-design & web-solutions!

Homepage and Insidepage has been Sliced, Optimized and Converted in html file format. These html pages need to be edited to make it 800 X 600 pixels and 1024 X 768 pixels resolution compatible with page linking and content incorporation. **Macromedia Dreamweaver MX*** (HTML Editor) is used to explain the html editing of this layout. **Microsoft FrontPage*** can also be used instead of Dreamweaver. **Macromedia Dreamweaver MX** is a professional HTML editor used for designing web sites. It is a great tool for creating and managing html web pages. The visual editing features in Dreamweaver lets you to quickly create pages without writing a line of code.

[Click here](#) to download .PSD & HTML source files.

Compatible With 800 & 1024 Resolution

Open Macromedia Dreamweaver MX*

1. Choose **File > Open** , Open **index.html** file.

The layout is displayed on the screen in the form of images together in a table.



2. Delete the comment icons incase they are displayed at the top and bottom of the layout table. **Editing the home page i.e. index.html**
3. Choose **Modify > Page Properties**
4. Specify the left margin, top margin along with the margin height and width as 0 value. Specify Title to the page as Index.



Steps to make the index.html file i.e Homepage 1024 x 768 resolution compatible.

5. The first step is to incorporate the background color or image in **Page Properties**. Background color is applied in the layout which has flat colors at the edges of the layout. But the current layout has effects so in such case background image is incorporated.
6. Open **index.psd** in Adobe Photoshop 7.0

Background image can be taken either vertically or horizontally depending on the layout. In this layout we will take a vertical image from the right side of the layout. As the layout has client images on the left, so the layout would be aligned left in 1024 resolution therefore the effect on the right side will cover the layout background with the help of background image.

7. Select **Rectangular Marquee Tool**.

Create a vertical **Rectangular selection** of width 2 pixels and height that of the layout i.e 434 pixels at the right edge.



8. To copy the image in a new file in one layer.

Select the background layer in the layers window in Photoshop 7.0.

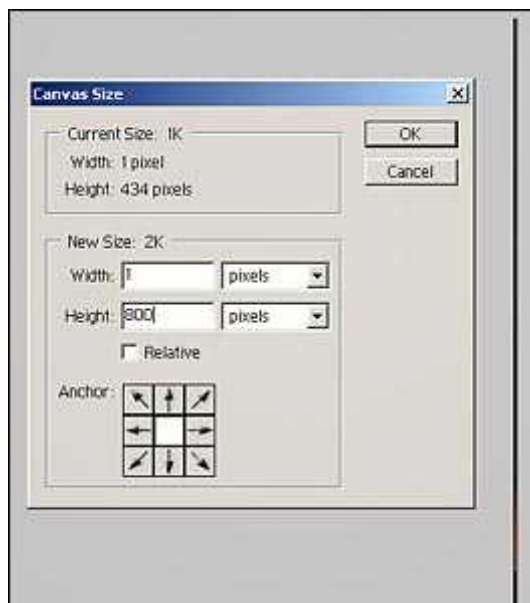
Press **Ctrl + Shift + C** (to copy all the above images in one command)

Press **Ctrl + N** (to create a new file of the same size as the selection)

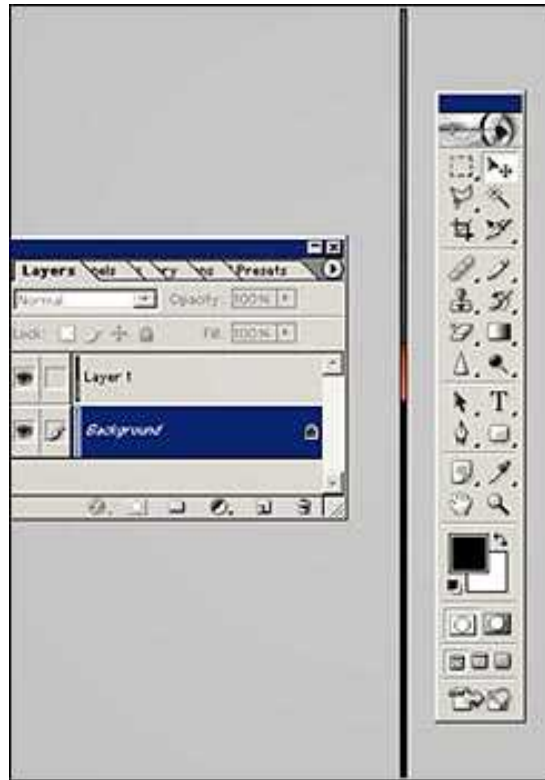
Press **Ctrl + Shift + V** (to paste the copied image in the new file created)

9. To make the layout compatible by a vertical **background image (bg image)**,

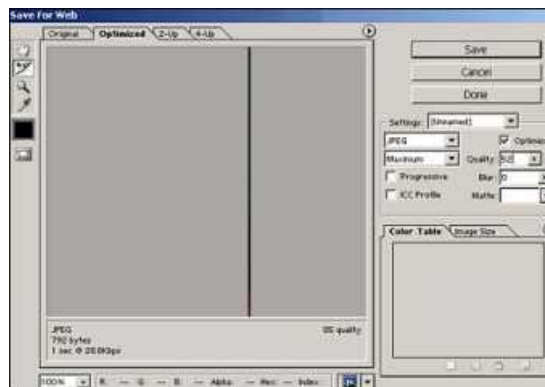
the bg image should be the height of the higher resolution i.e 1024 X 768 pixels to be made compatible. If the layout has to be made 1024 x 768 pixels resolution compatible then the height of the image should be around 800 pixels so that the design in the image doesn't tile after 768 pixels.



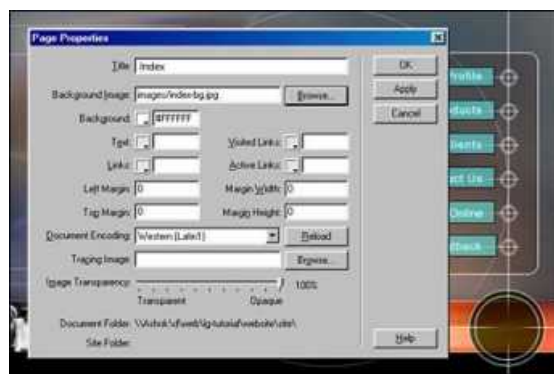
10. Choose **Image > Canvas Size**, enter 800 pixels and Click ok. Select **Move Tool** and move the image to the top so that the image top edge touches the canvas top edge. To fill the bottom empty space in the canvas. Choose the **Eye Dropper** tool, Zoom the image upto **1600%**. Pick the color by clicking on the extreme bottom part of the image. The color gets selected and is displayed in the Foreground Color Palette. Select the background layer and press **Alt + Back Space** to fill the color.



11. Press **Ctrl + Shift + Alt + S** (to open **Save For Web** window) Save the image in jpeg file format and colors as **52** & specify a relevant file name. We have named as **index-bg**, so that it can be easily recognised.



12. Choose **Modify > Page Properties > Background image**, click on browse and select index-bg.jpeg image.



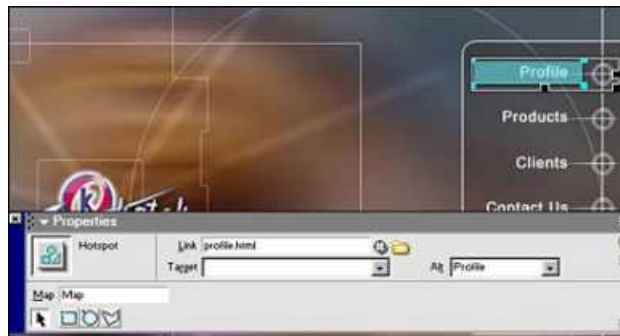
13. The image gets incorporated in the background of the layout.
Choose **Window > Properties**
Select the layout table and specify **Align as " Left "** from the drop down menu. Check the layout in Internet Explorer. Change the monitor resolution to **800 X 600 pixels** or vice-versa i.e. **1024 X 768 pixels** to check the layout compatibility.



Steps to edit the html page and make it 1024 X 768 pixels resolution compatible is complete.

Steps To Specify Links In The Navigation

14. Choose the " **Profile**" image



15. Click Map in the Properties panel
Click and drag to create a **Rectangular Hotspot** over the Profile link.
16. After creating the hotspot enter profile.html in Link and enter the respective link name in Alt to specify Alt tags.



17. Similarly create hotspots for all the links (i.e Products, Clients, Contact Us, Advice Online, Feedback) and specify link as per their respective file names.
18. These menu links will automatically get linked to their respective pages when the inside pages will be created in Dreamweaver.
- Steps to specify links in the Navigation is complete. Thus Html conversion & 1024 X 768 pixels compatibility of index i.e homepage is complete.**

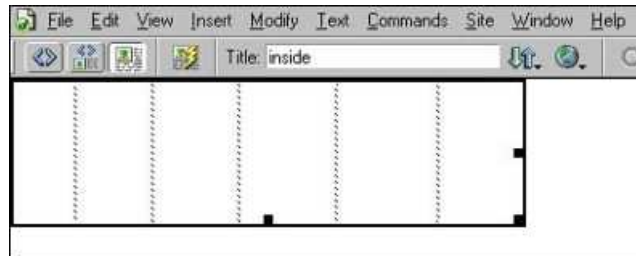
HTML Conversion & 1024 Compatibility Of Insidepage

The inside page will be structured in a different style as compared to the homepage. There will be 2 background (bg) images one for the top panel and second for the body to make the page 1024 compatible.

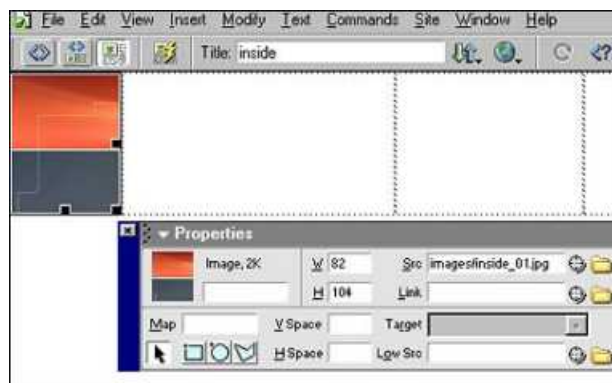
Top panel, Left panel with links and the body part will be in 3 different tables.

1. Choose **Insert > Table**

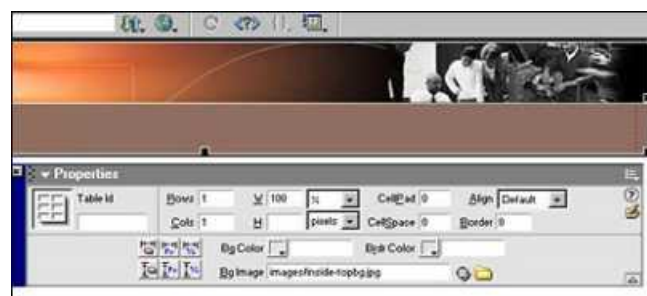
Create a table of 6 column and 1 row, with border as 0 & cell pad cell space as 0.



2. Insert **inside_01.jpg** image in the first column.



inside_02.jpg in second column, **inside_03.jpg** in 3rd column, **inside_04.jpg** in 4th column. **inside_05.jpg** in 5th column & **inside_06.jpg** in 6th column.



3. Choose **Insert > Table**

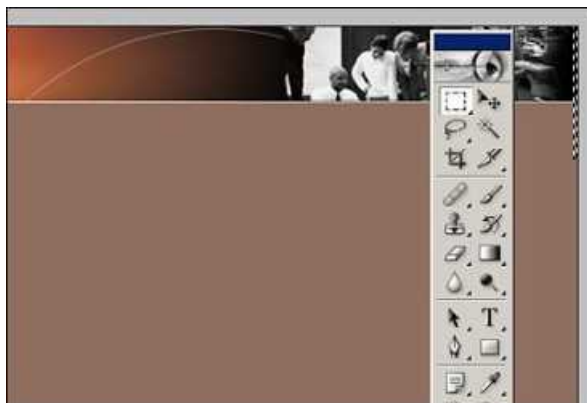
Create a table of 1 column and 1 row, with border as 0 & cell pad cell space as 0 & width 100 %.



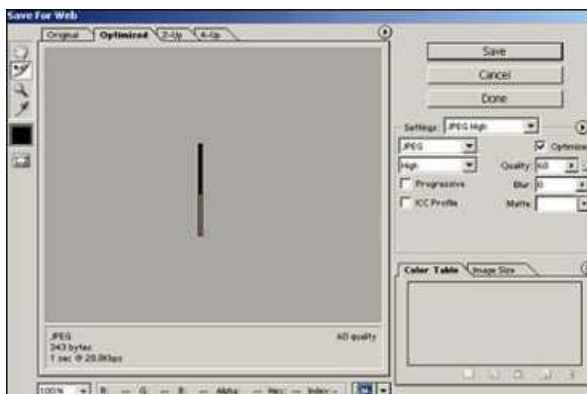
Place the earlier table with 6 columns in this table.
The top panel will be made 1024 compatible from the right side therefore align the inside table containing top panel images to the left.



4. In 1024 resolution the last part of **inside_06.jpg** image i.e. the black and reddish grey color should continue. To create the top panel bg image. Open inside.psd in Adobe Photoshop 7.0.
5. Zoom the layout upto 200 % on the top right corner of the layout.
6. Create a Rectangular selection of width 3 pixels & height 150 pixels. The height is taken longer than the panel to avoid image tiling.



7. To copy the image in a new file in one layer.
Select the background layer in the layers window in Photoshop 7.0.
Press **Ctrl + Shift + C** (to copy all the above images in one command)
Press **Ctrl + N** (to create a new file of the same size as the selection)
Press **Ctrl + Shift + V** (to paste the copied image in the new file created)
Press **Ctrl + Shift + Alt + S** (short key for **Save For Web** option)
Save the file as jpeg with 60 colors with a relevant name.

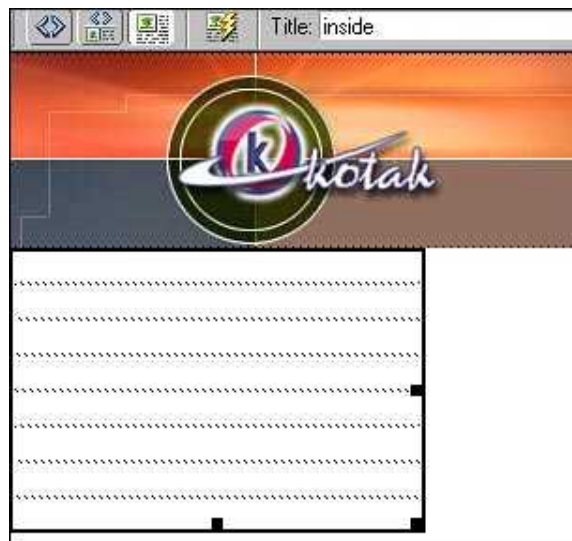


- We have named as **inside-topbg.jpg**.
8. Switch to Dreamweaver Mx.
Select the **Outer table** in the top panel.
In the Properties panel specify table background with **inside-topbg.jpg** image.
Steps to make the top panel 1024 resolution compatible is complete.

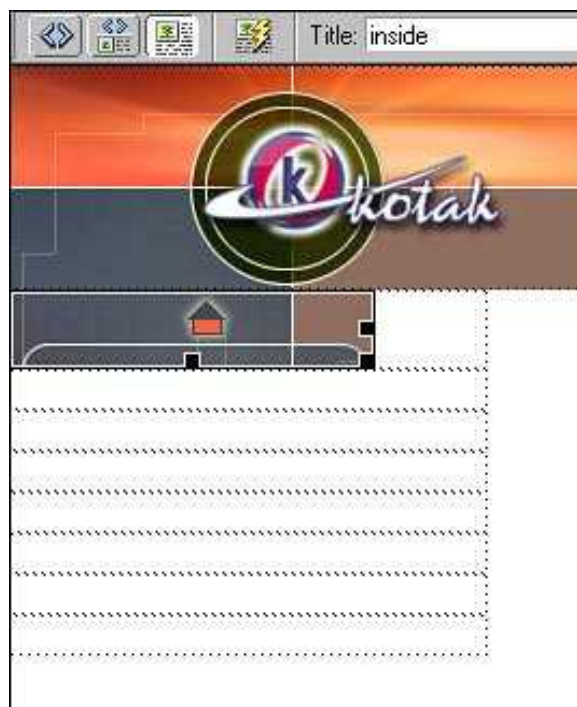


Step To Create The Left Panel

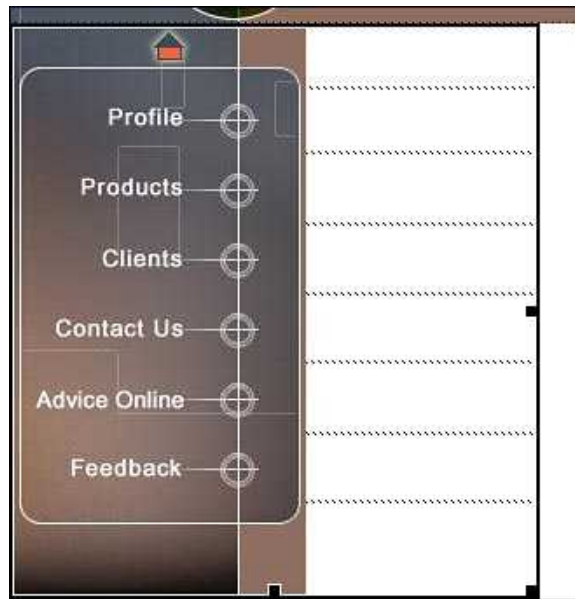
1. Choose **Insert > Table**
Create a table of 8 rows and 1 column with border 0, Cell pad Cell space as 0.



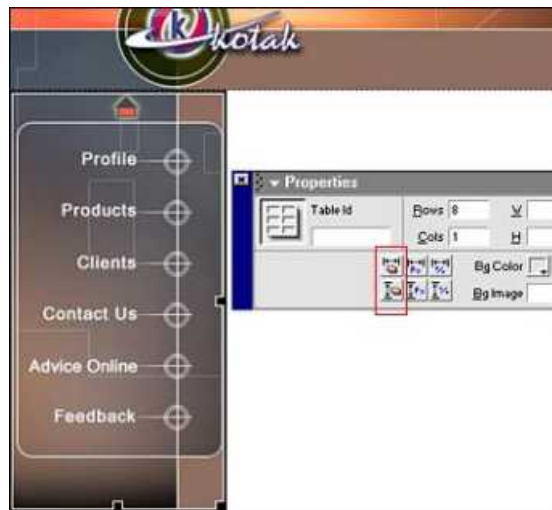
Insert **inside_07.jpg** in the first row.



inside_09.jpg in the second row, **inside_10.jpg** in third row , **inside_11.jpg** in fourth row, **inside_12.jpg** in fifth row, **inside_13.jpg** in sixth row, **inside_14.jpg** in seventh row & **inside_15.jpg** in eighth row.

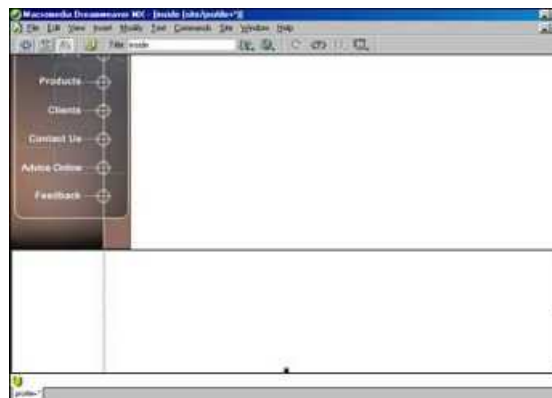


Select the left panel table, In the properties panel click on clear row width and clear row height to remove unwanted height and width in the table.



2. Steps to create the body table 1024 resolution compatible.

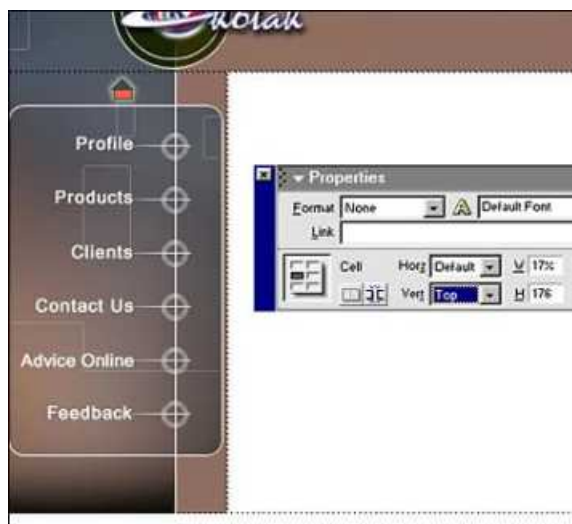
Create a table of 1 row and 2 columns with border 0, Cell pad Cell space as 0 & width 100%.



Select the left panel table and cut paste it inside the first column of the body table. Adjust the width of the 1st column of the body table as per the inside left panel table.



3. Select the left panel table placed inside the first column of the body table and choose alignment as **Vert 'Top'** in the Properties Panel. So that the table doesn't slide down while the content is placed in the second column of the body table



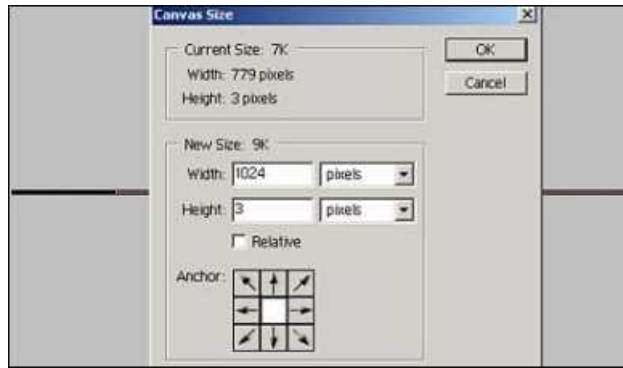
4. Open Adobe Photoshop.
Choose **File > Open** and open **inside.psd** layout.
Create a rectangular marquee selection of width 779 pixels and height 3 pixels.



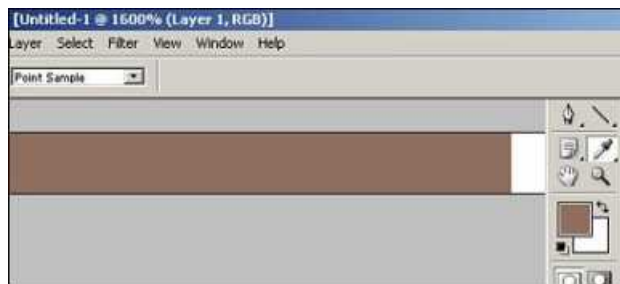
Select the background layer in the layers window in Photoshop 7.0.
Press **Ctrl + Shift + C** (to copy all the above images in one command)
Press **Ctrl + N** (to create a new file of the same size as the selection)
Press **Ctrl + Shift + V** (to paste the copied image in the new file created)



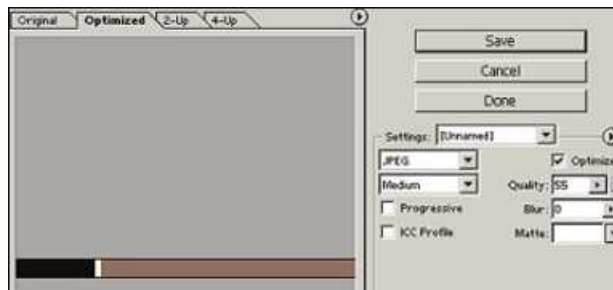
5. To make the body table compatible by a horizontal bg image, the bg image should be the width of the higher resolution to be made compatible. If the layout has to be made 1024 x 768 pixels resolution compatible then the width of the image should be around 1024 pixels or more.
6. Choose **Image > Canvas size**, enter width 1024 pixels and Click ok.



Select **Move Tool** and move the image to the left so that the image touches the canvas left edge. To fill the right empty space in the canvas. Choose the **Eye Dropper tool**, Zoom the image upto 1600 %. Pick the color by clicking on the extreme right edge part of the image. The color gets selected and is displayed in the Foreground Color Palette. Select the background layer and press **Alt + Back Space** to fill the color.



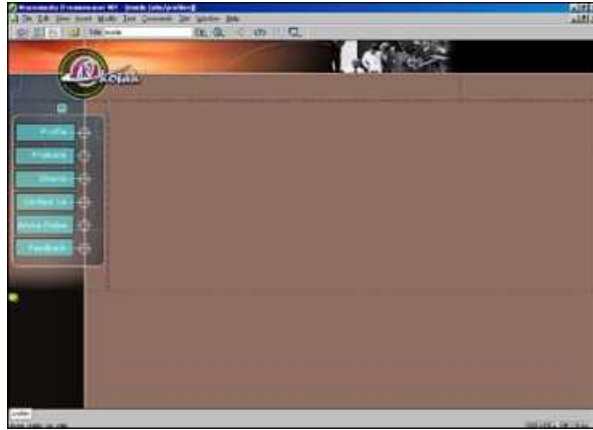
- Click **Save For Web** option (short key **Ctrl + Shift + Alt + S**)
Save the file as jpeg with 55 colors and relevant name.
We have named as **inside-pagebg.jpg**.



- Choose **Modify > Page Properties > Background Image**, browse **inside-pagebg.jpg** image and click ok.



- Click inside the second column of the body table and choose alignment as **Vert 'Top'** in the Properties Panel, so that the content starts from the top. Type dummy text of around 4 to 5 lines to check the table settings. Specially the left panel with menus should not slide down when the text is incorporated.



15. To create the other inside pages as per their links for eg. to create profile .html page. Choose **File > Save As**, Save the file as **profile.html**. The inside page gets saved as the profile.html, similarly create the other inside pages.
16. To check the linking open index.html file in Internet Explorer or any other browser and click on the links to check the file.
Steps for html conversion and 1024 compatibility of insidepage.psd with linking is complete.

These 4 Firewire newsletter series of professional steps in web designing covered the practical techniques in designing a web site. The newsletters covered the step by step process with images explained:

- Understanding the client requirements
- Designing a layout in Adobe Photoshop*,
- Optimizing, slicing and HTML Conversion of the layout in Adobe ImageReady*
- Developing HTML Pages, making the website compatible in 800 X 600 pixels, 1024 X 768 pixels resolution compatible through Macromedia Dreamweaver*.

All accompanying logos, brands and product names are trademarks of their respective companies.

Blood for humans comes only from humans : Donate Blood

<http://www.donate-blood.org> E-mail - om@donate-blood.org



What is Layout Galaxy ?

Layout Galaxy is ready to use design concepts in their source format. Different CDs in total contain 300 Photoshop.psd & 100 Flash fla layouts. Select the layout, make necessary changes to suit a customer's need & present demo to the client for approval. It's Select, Set & Go. It saves web designer's time & cost of production. It accelerates web designer's work-pace. It enhances productivity. It is continuous flow of inspiration & wealth of design ideas. Download Free 7 (Photoshop & flash) Layouts to believe it yourself.